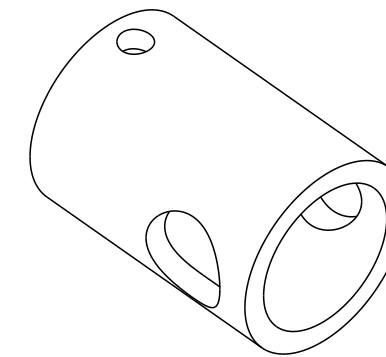


NOTES:

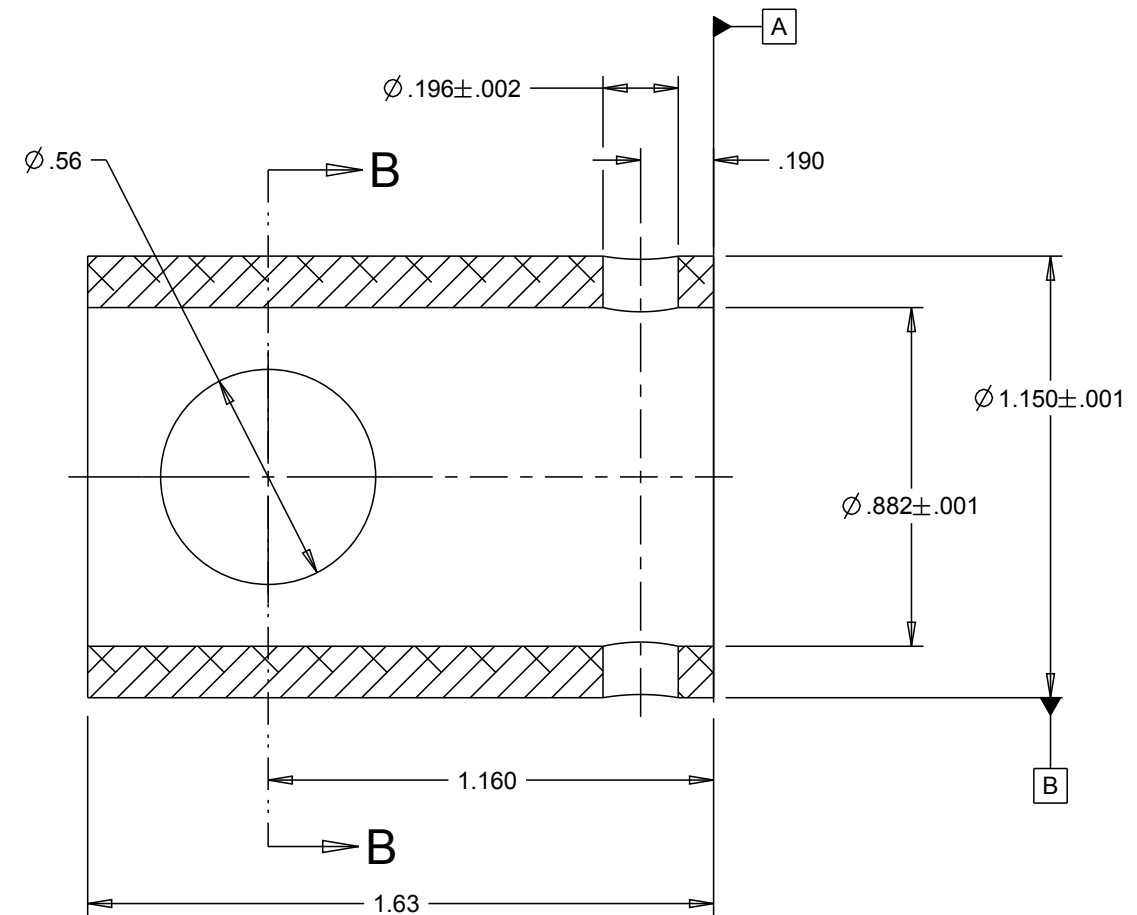
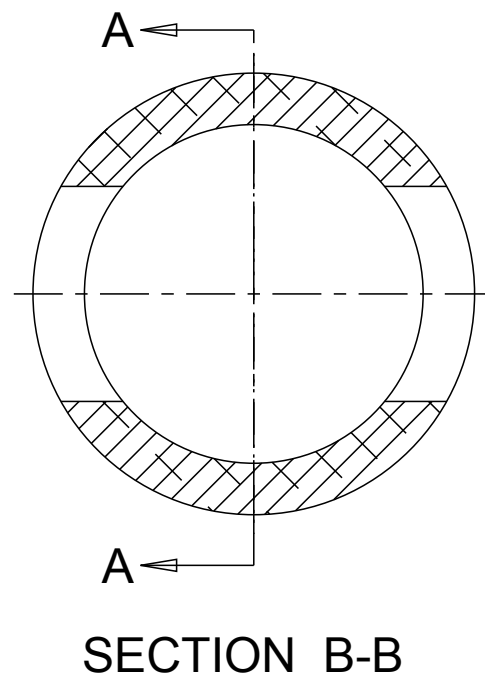
1. CHANGE OF MATERIAL IS NOT PERMITTED UNLESS APPROVED IN WRITING BY OTTO ENGINEERING PERSONNEL.
2. DRAWING TO BE INTERPRETED IN ACCORDANCE WITH THE CURRENT REVISION OF ASME Y14.5M.
3. TSI TO BE INTERPRETED AS THEORETICAL SHARP INTERSECTION.
4. THIS PART/PRODUCT IS TO BE MANUFACTURED WITH THE APPLICABLE REGULATIONS OF EC DIRECTIVES 2002/95/EC AND 2002/96/EC, RESTRICTION OF THE USE OF HAZARDOUS SUBSTANCES IN ELECTRICAL AND ELECTRONIC EQUIPMENT (RoHS) AND WASTE ELECTRICAL AND ELECTRONIC EQUIPMENT (WEEE).
5. PARTS SHALL BE FREE OF ALL CONTAMINANTS INCLUDING GREASE, DIRT, MACHINING OIL AND OTHER CONTAMINANTS
6. ALL DIMENSIONS ARE AFTER PLATING
7. PARTS SHALL BE PACKAGED IN A MANNER TO PREVENT SCRATCHING, BOWING OR OTHER DAMAGE DURING SHIPMENT

302380

REV	OCN #	DATE	APR
A	066232	15 JUN 12	KI



SCALE 1:1



<p>■ MANUFACTURING ▲ SPC</p>		<p>OTTO CARPENTERSVILLE, ILLINOIS USA</p>	<p>DESCRIPTION G2, ADAPTER SPRUCE COBRA GRIP</p>			
<p>PROCESS: ANODIZE PER MIL-A-8625 TYPE II, CLASS 2 COLOR PER 3EN000022</p>	<p>MATERIAL: ALUMINUM ALLOY TYPE 2011-T3 PER AMS-QQ-A-225/3 (MTL2011-XX)</p>		<p>DRWN. JLW CHKD. KI APPD. AH WT.</p>	<p>SIZE B</p>	<p>FSCM NO 21649</p>	<p>DRAWING NO. 302380</p>
<p>UNLESS OTHERWISE SPECIFIED: DIMENSIONS ARE IN INCHES. TOLERANCES ARE AS LISTED. MUST BE FREE FROM BURRS AND SHARP EDGES.</p>		<p>TOLERANCES .XX ± .01 .XXX ± .005 ANGLES ± 1° SURFACES 64 MICROINCH DO NOT SCALE DRAWING.</p>	<p>THIS DOCUMENT IS THE CONFIDENTIAL PROPERTY OF OTTO ENGINEERING, INC.. IT IS NOT TO BE USED IN ANY WAY DETRIMENTAL TO THE INTERESTS OF OTTO ENGINEERING, INC..</p>			
		<p>THIRD ANGLE PROJECTION</p>		<p>Scale 2:1</p>	<p>Sheet 1 OF 1</p>	