

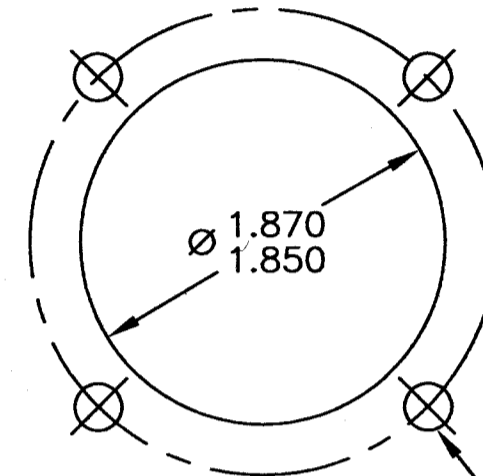
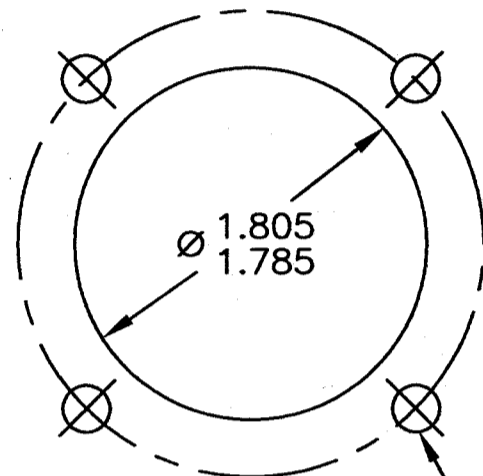
NOTES:

1. ROTATION OF NOZZLE TO OPEN OR CLOSE: 90°+/-5°
2. MINIMUM AIRFLOW AT 0.5 IN. WATER: 8.9 CFM. (WITHOUT PLENUM CAP)
3. APPROXIMATE VELOCITY AT 0.5 IN. WATER AND 24" DISTANCE: 460 FPM.
4. MAXIMUM LEAKAGE (CLOSED POSITION): .20 CFM @ 5.0 INCHES H₂O UPSTREAM PRESSURE.
5. TORQUE TO ROTATE BALL IN MOUNT: 2.5+/-0.5 IN-LBS.
6. TORQUE TO OPEN OR CLOSE VALVE: 1.0+/-0.5 IN-LBS.
7. FINISH: SEE TABLE 1.
8. PLENUM CAP COLOR: BLACK.
9. MAXIMUM WEIGHT: 80 GRAMS.
10. ACCEPTANCE TEST PER QCP-007 FOR NOTES 2,3,4,5, AND 6.

11. APPLY GREASE, ITEM 12 TO LOCATION SHOWN. ROTATE NOZZLE TO EVENLY SPREAD GREASE.

12. ORIENT ACTUATOR, ITEM 8, AS SHOWN IN VIEW C-C.

CURRENT RELEASE					
DRAFTER	DATE	CHECKED	DATE	INITIATOR	DATE
<i>D. Moore</i>	7/10/12	<i>PC</i>	7-10-12	<i>M. G. [Signature]</i>	7/10/12
REVISIONS					
LTR.	ECO#	DESCRIPTION	RELEASED	DATE	
E		SEE DCN 01410.	BLB	94/08/22	
F		SEE DCN 02487.	PT	96/02/01	
G		SEE DCN 05613.	MS	98/06/05	
H	3777	SEE ECO	BB	12/16/03	
I	4191	SEE ECO	EK	1/11/06	
J	5712	SEE ECO	YP	6/5/07	
K	7576	SEE ECO	<i>[Signature]</i>	7/10/12	



4 PL Ø .240-.230 THRU ON 2.375 P.C.D.

4 PL Ø .240-.230 THRU ON 2.375 P.C.D.

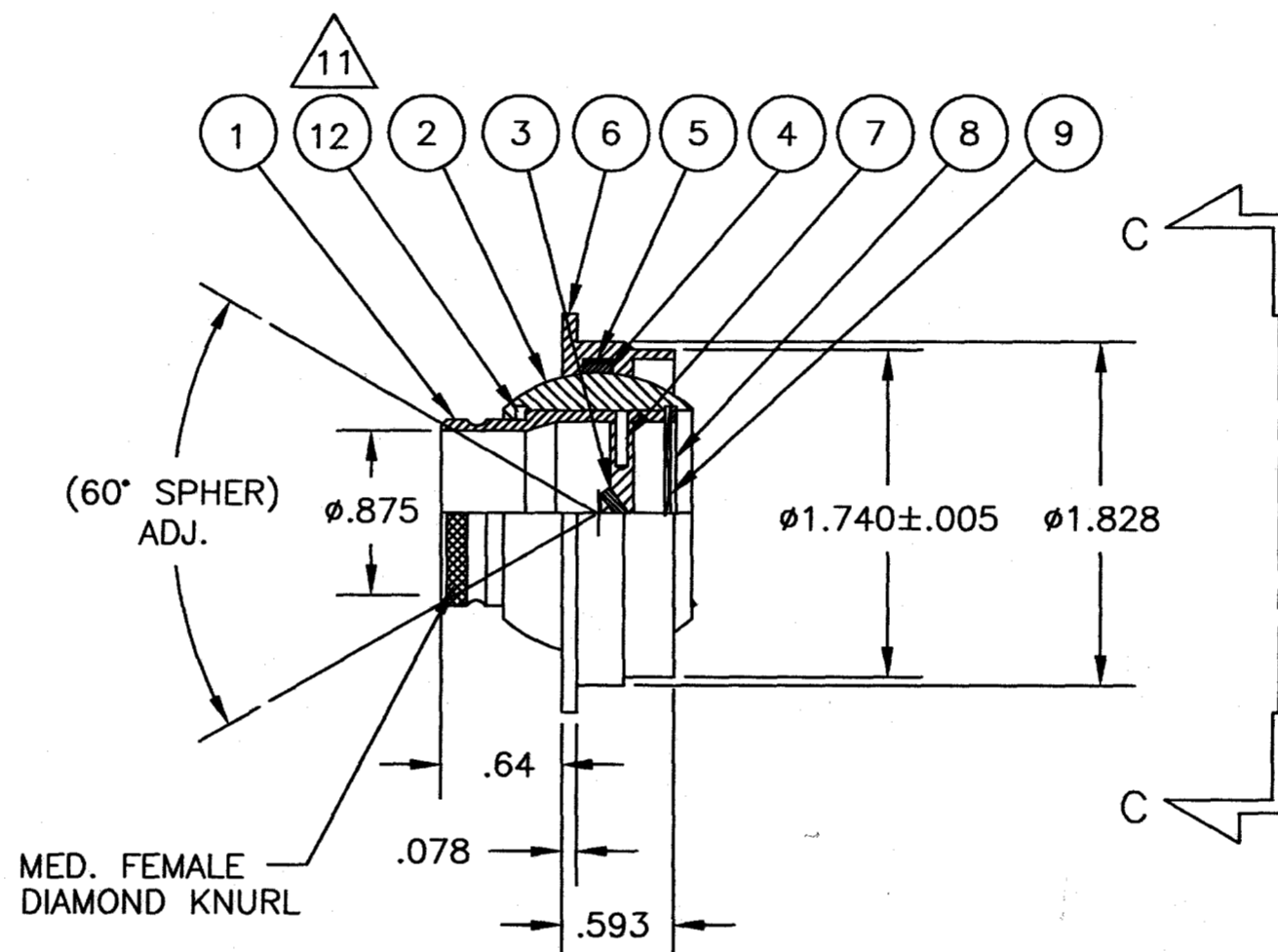
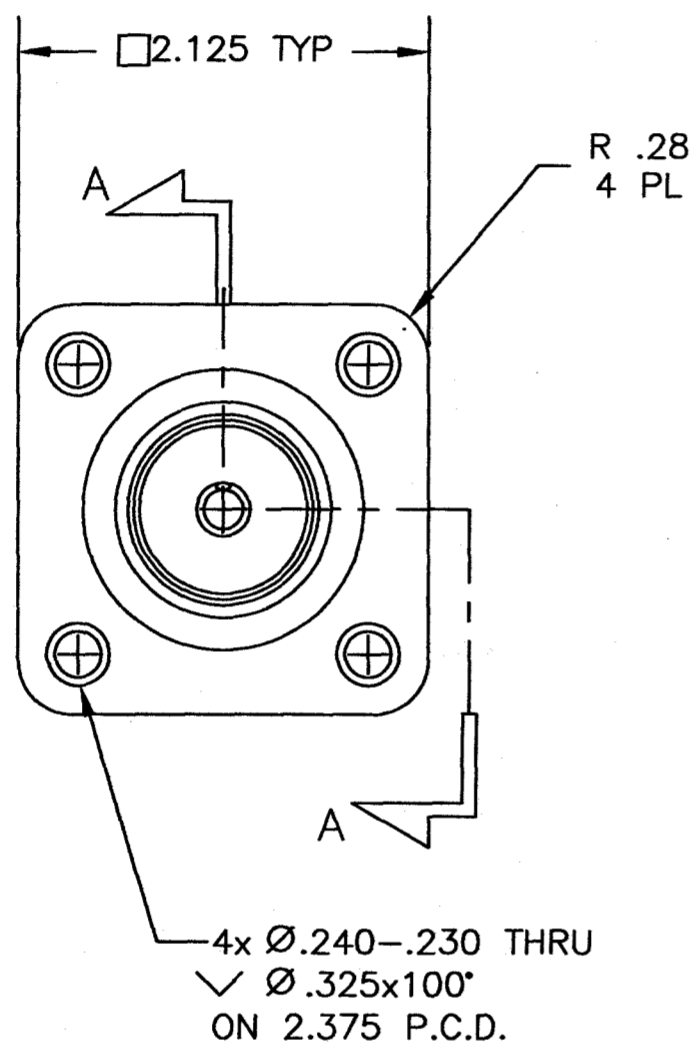
-05

-00, -01, -02, -03, -04

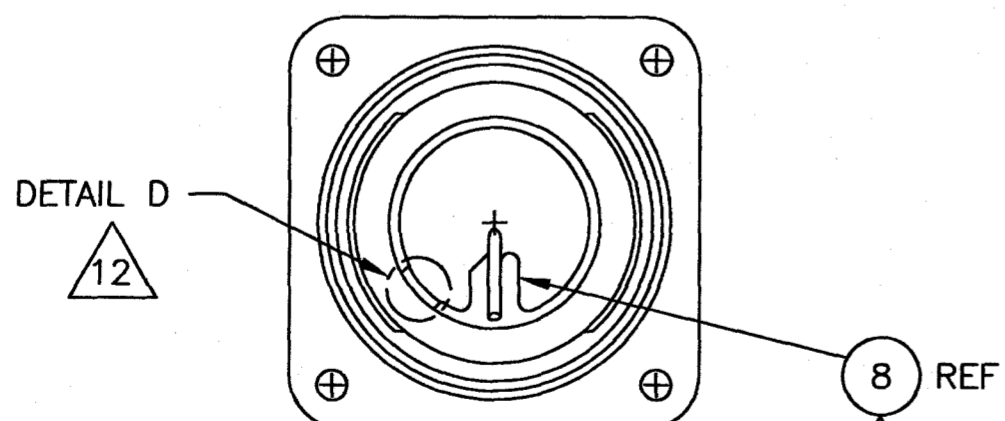
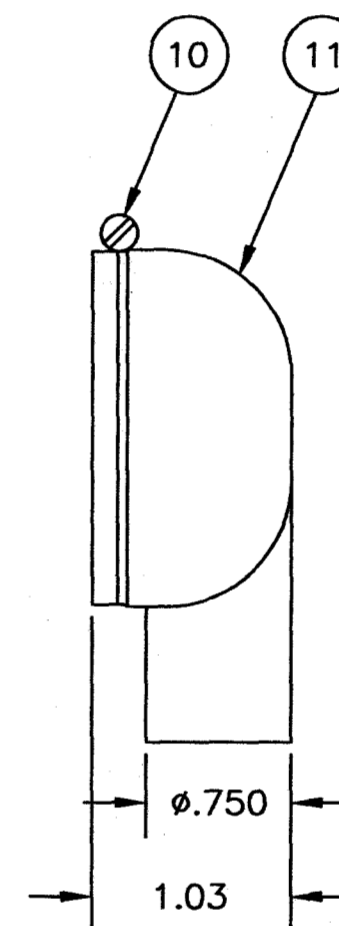
RECOMMENDED MOUNTING HOLES

1	A/R	A/R	A/R	A/R	A/R	A/R	QTY REQD	PART OR IDENTIFYING NO	NOMENCLATURE OR DESCRIPTION	MATERIAL SPECIFICATION	ITEM NO.
								2232-02	FLANGE	AL ALLOY	13
								5042-01	GREASE		12
	1	1				1		2083-00	PLENUM CAP	POLYCARBONATE	11
								2000-21	CLAMP ASSEMBLY	AL ALLOY	10
1	1	1	1	1	1	1		2126-00	SPRING WASHER	SST 301	9
1	1	1	1	1	1	1		2123-00	ACTUATOR	AL ALLOY	8
2	2	2	2	2	2	2		5015-01	GROOVE PIN	CARBON STEEL	7
	1	1	1	1	1	1		2232-00	FLANGE	AL ALLOY	6
2	2	2	2	2	2	2		0779-00	SPRING MARCEL	SPRING STEEL	5
1	1	1	1	1	1	1		0778-00	FELT, SEAL	FELT HARD	4
1	1	1	1	1	1	1		2129-00	DISC ASSEMBLY	AL ALLOY	3
1	1	1	1	1	1	1		2125-00	BALL	AL ALLOY	2
1	1	1	1	1	1	1		2124-00	NOZZLE	AL ALLOY	1

<p>PROPRIETARY NOTICE</p> <p>THIS DRAWING/DOCUMENT CONTAINS PROPRIETARY DESIGNS, SPECIFICATIONS, DATA, INFORMATION AND TECHNICAL MATERIAL THAT ARE SOLE PROPERTY OF AEROSPACE LIGHTING CORPORATION, A B/E AEROSPACE COMPANY, TO BE HELD AND TREATED BY ITS RECIPIENT ON A CONFIDENTIAL BASIS, AND NOT TO BE SHOWN OR DISCLOSED TO ANY UNAUTHORIZED ORGANIZATION OR PERSON</p>			UNLESS OTHERWISE SPECIFIED DIMENSIONS ARE IN INCHES:	DRAWN	DATE	<p>B/E AEROSPACE, INC. BUSINESS JET GROUP AEROSPACE LIGHTING CORPORATION 75 BEACON DR., HOLBROOK, NEW YORK 11741</p>	
			FRAC. DEC. ANG. ±1/32 2 PL ±.03 ±1/2 3 PL ±.010	INIT.			
			MATERIAL: SEE PARTS LIST	ENGR.	G		09/18/85
			FINISH: SEE NOTES	PROD.			
	NEXT ASSY	USED ON		Q.C.		<p>TITLE: AIR VALVE ASSEMBLY</p> <p>CODE IDENT. NO. 59579 SIZE C DRAWING NO. 2230 REV. K</p> <p>SCALE 1/1 AUTOCAD SHEET 1 OF 4</p>	

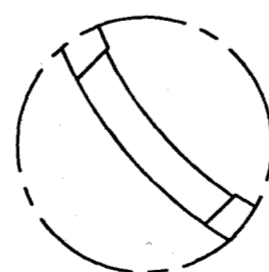


SECTION A-A
-00,-01,-02,-03,-04




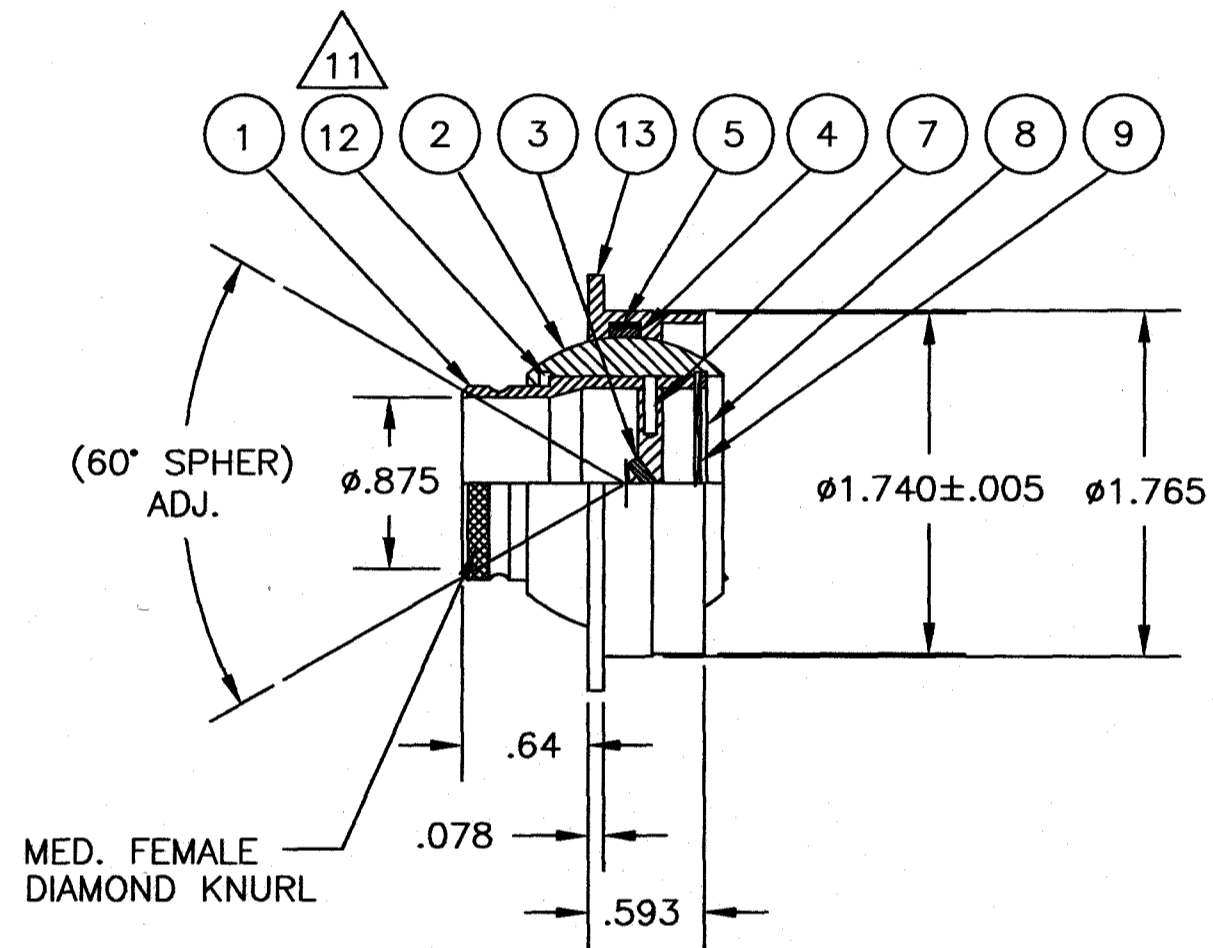
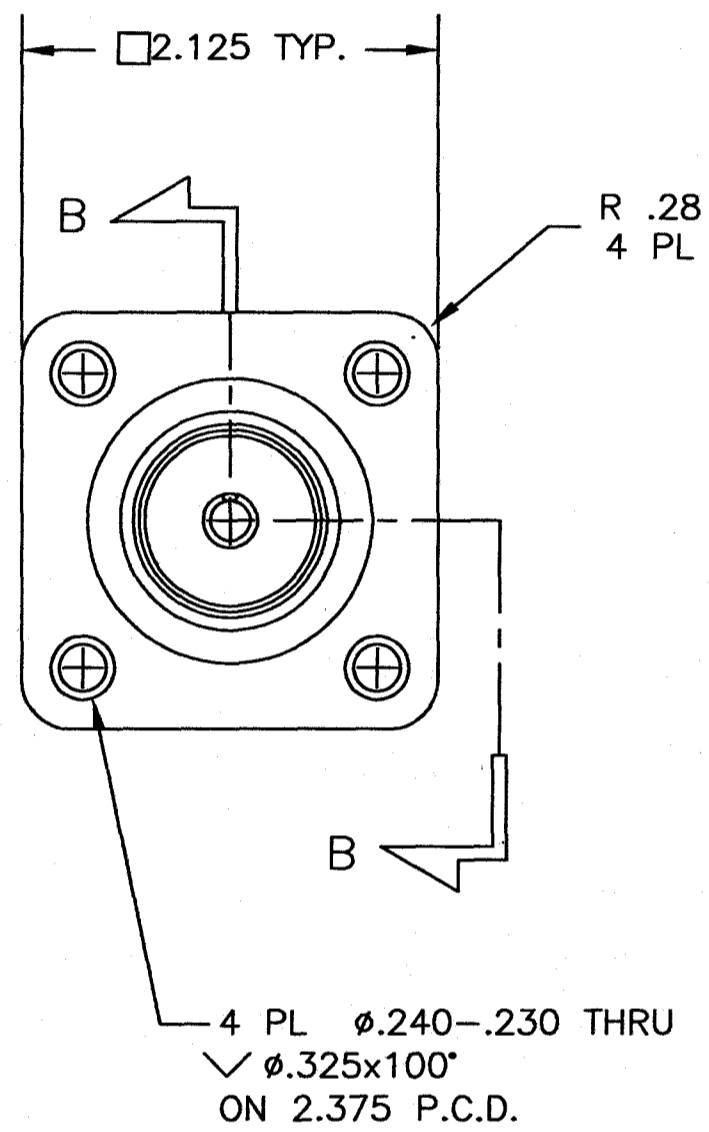
VIEW C-C

SECTION VIEW A-A NOT SHOWN
ITEMS 10 AND 11 NOT SHOWN

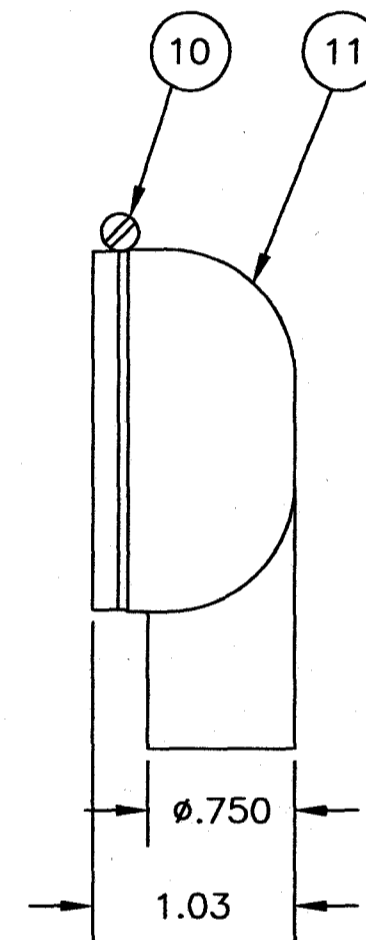


DETAIL D
SCALE: 4/1


	B/E AEROSPACE, INC. BUSINESS JET GROUP AEROSPACE LIGHTING CORPORATION 75 BEACON DR., HOLBROOK, NEW YORK 11741		CODE IDENT. NO. 59579	SIZE C	DRAWING NO. 2230	REV. K
	SCALE 1/1		AUTOCAD		SHEET 2 OF 4	



SECTION B-B



-05

	B/E AEROSPACE, INC. BUSINESS JET GROUP AEROSPACE LIGHTING CORPORATION 75 BEACON DR., HOLBROOK, NEW YORK 11741		CODE IDENT. NO. 59579	SIZE C	DRAWING NO. 2230	REV. K
	SCALE 1/1		AUTOCAD		SHEET 3 OF 4	

2230-05	B/E EBONY BROWN (PER APPROVED ENGINEERING COLOR SAMPLE) PER-MIL-A-8625, TYPE II, CLASS 2.	B/E EBONY BROWN (PER APPROVED ENGINEERING COLOR SAMPLE) PER-MIL-A-8625, TYPE II, CLASS 2.	B/E EBONY BROWN (PER APPROVED ENGINEERING COLOR SAMPLE) PER-MIL-A-8625, TYPE II, CLASS 2.	B/E EBONY BROWN (PER APPROVED ENGINEERING COLOR SAMPLE) PER-MIL-A-8625, TYPE II, CLASS 2.
2230-04	ANODIZE PER MIL-A-8625, TYPE I, CLASS 1. APPROXIMATE COLOR NO. DN 26231 (GREY)	ANODIZE PER MIL-A-8625, TYPE I, CLASS 1. APPROXIMATE COLOR NO. DN 26231 (GREY)	ANODIZE PER MIL-A-8625, TYPE I, CLASS 1. APPROXIMATE COLOR NO. DN 26231 (GREY)	ANODIZE PER MIL-A-8625, TYPE I, CLASS 1. APPROXIMATE COLOR NO. DN 26231 (GREY)
2230-03	ANODIZE PER MIL-A-8625, TYPE II, CLASS 2. (BLACK #37038)	ANODIZE PER-MIL-A-8625, TYPE II, CLASS 1.	ANODIZE PER-MIL-A-8625, TYPE II, CLASS 1.	ANODIZE PER-MIL-A-8625, TYPE II, CLASS 1.
2230-02	ANODIZE PER-MIL-A-8625, TYPE II, CLASS 1.	ANODIZE PER-MIL-A-8625, TYPE II, CLASS 1.	ANODIZE PER-MIL-A-8625, TYPE II, CLASS 1.	ANODIZE PER-MIL-A-8625, TYPE II, CLASS 1.
2230-01	CLEAR ANODIZE PER-MIL-A-8625E, TYPE II, CLASS 1.	CLEAR ANODIZE PER-MIL-A-8625E, TYPE II, CLASS 1.	CLEAR ANODIZE PER-MIL-A-8625E, TYPE II, CLASS 1.	CLEAR ANODIZE PER-MIL-A-8625E, TYPE II, CLASS 1.
2230-00	B/E EBONY BROWN (PER APPROVED ENGINEERING COLOR SAMPLE) PER-MIL-A-8625, TYPE II, CLASS 2.	B/E EBONY BROWN (PER APPROVED ENGINEERING COLOR SAMPLE) PER-MIL-A-8625, TYPE II, CLASS 2.	B/E EBONY BROWN (PER APPROVED ENGINEERING COLOR SAMPLE) PER-MIL-A-8625, TYPE II, CLASS 2.	B/E EBONY BROWN (PER APPROVED ENGINEERING COLOR SAMPLE) PER-MIL-A-8625, TYPE II, CLASS 2.
PART NO.	FLANGE	NOZZLE	BALL	DISC.
TABLE 1				

FINISH SHALL BE UNIFORM ON ALL AIR VALVE COMPONENTS.